

PEOPLE
CULTIVATING YOUR
BUSINESS, YOUR
STAFF, YOUR CLIENTS

PROJECTS
DESIGNS AND DETAILS
THAT INSPIRE AND
INFORM

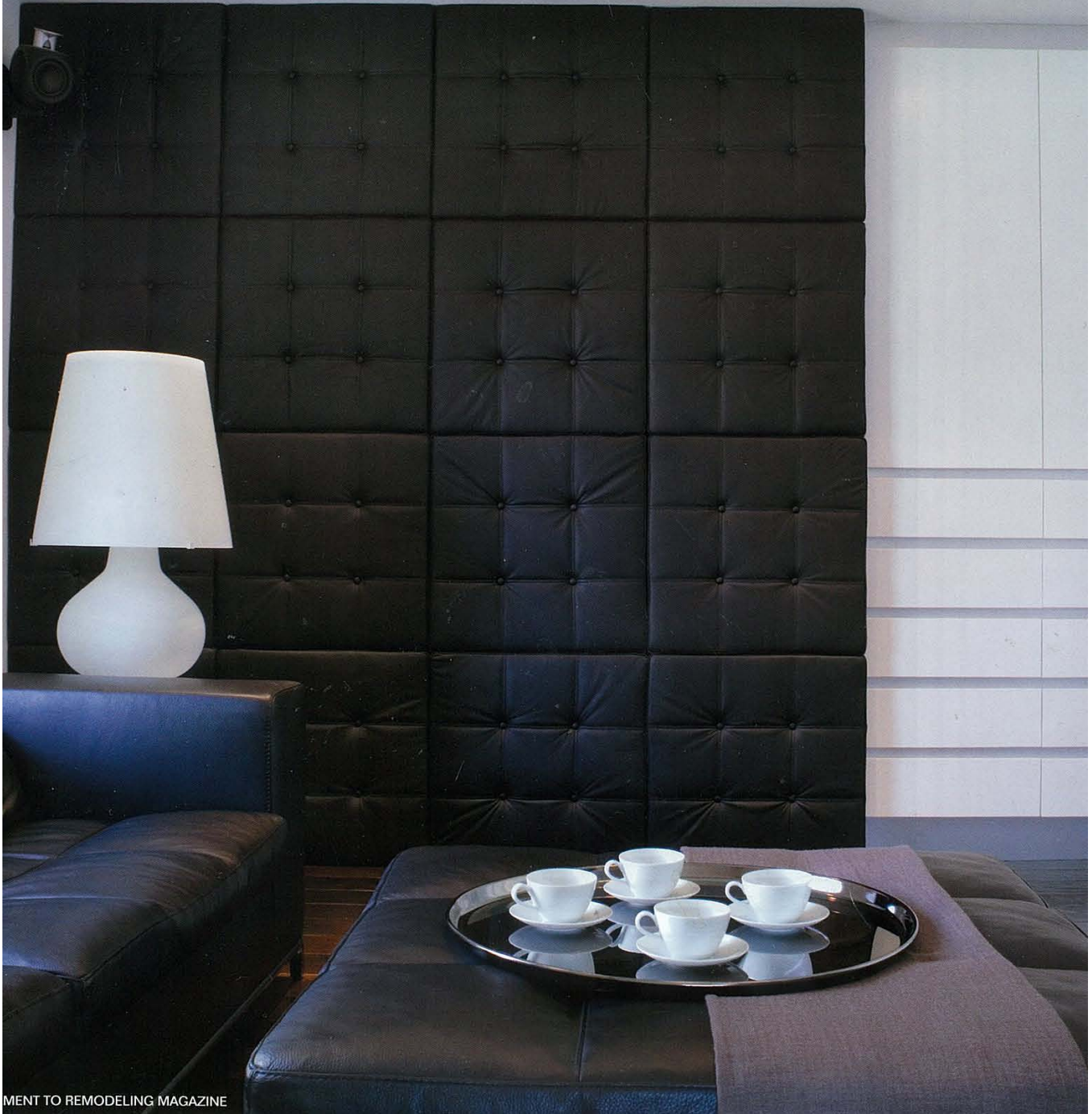
PROFITS
TIPS FOR MARGIN
ENHANCEMENT AND
RISK MANAGEMENT

PRODUCTS
THE LATEST IN HIGH-
END K+B, RETRO-
STYLING, AND MORE

Jpscale

Remodeling

DESIGNING AND BUILDING AT THE HIGH END
FALL 2008





Rich materials, textures, and curves add interest to a simple color palette.

Ten years ago, when S+H Construction, of Cambridge, Mass., renovated the exterior of this house, the homeowners' choice of peach paint stood out in a sea of conservative grays and browns in the Harvard Square neighborhood. Recently, when it came time for a more extensive remodel, the owners opted to replace the pastel shade with a palette of gray, white, and dark brown on both the outside and inside of the home.

When they began thinking about the most recent remodel, the homeowners requested that S+H Construction owners Doug Hanna and Alex Slive visit Iceland to see the renovation of their home there by Reykjavik architect Bjorn Skaptason of Atelier Arkitekta, who they had also hired for the Boston remodel. "[The client] wanted to show us the style and quality of the work," Hanna says.

For the smaller 1998 exterior and basement remodel, the homeowners had hired a few Icelandic carpenters to help S+H Construction with the job. They wanted some of the same Nordic island crew to collaborate again with S+H. The owners asked the international team to complete the whole-house project in eight months.

It took Skaptason a year to design the project. "The front façade is like an image or stage," he says, "but backstage, it is a whole new world. You enter through this façade to discover

